

# SMART TORCH MODULE

For precise adjustment of welding parameters at the torch handle.

Use the graphic display to get a detailed overview of welding settings.

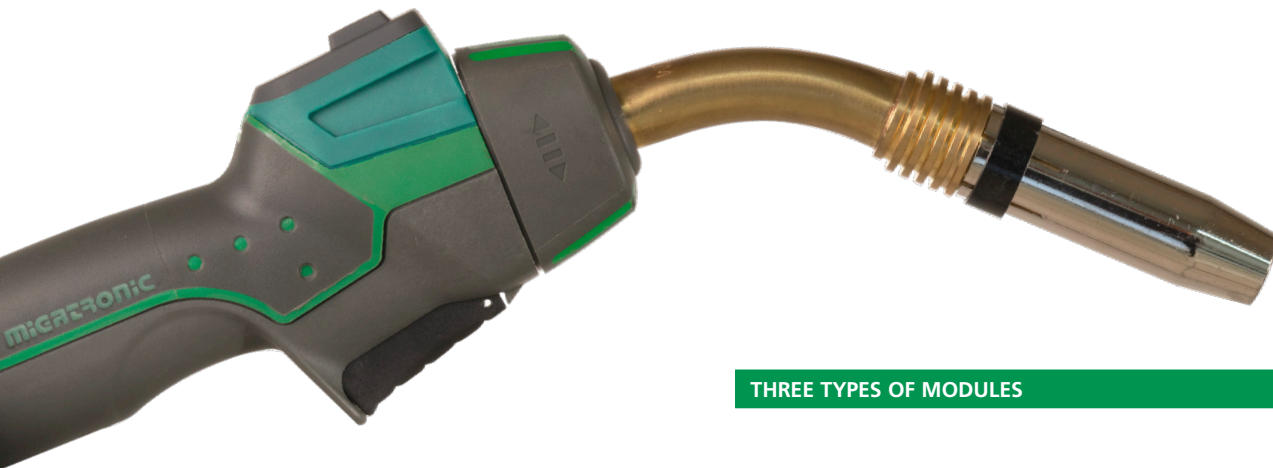


Fine-tune the arc without being next to the welding machine.

Smart Torch is ideal for welding productions requiring:

- High flexibility and great accuracy
- Sequence welding

# EASY ACCESS TO PRECISE ADJUSTMENT OF WELDING PARAMETERS

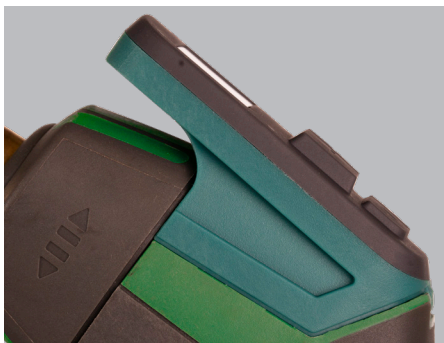


A Smart Torch module is placed on the torch handle, providing easy access to adjusting a variety of welding parameters.

Using the graphic display, the welder can fine-tune settings perfectly, all the way down to one amp - without being right next to the welding machine. Simultaneously, the display gives the welder a good overview of machine settings.

Fine-tuning of welding parameters is particularly useful for welding jobs that require sequence welding. It is quick and easy for the welder to switch program and adjust wire feed speed or welding current.

All modules are applicable with MIG-A Twist® torches along with Sigma Select and Automig 300 Pulse welding machines with graphic display.



Note: Smart Torch modules are compatible with Sigma Select and Automig 300 Pulse welding machines equipped with wire feeder PCB 71613664 version C1 and newer versions.

## THREE TYPES OF MODULES

### SMART TORCH MODULE WITH TWO BUTTONS

Adjust wire feed speed (manual MIG/MAG) or welding current (synergic MIG/MAG)

Art. no. 80100432



### SMART TORCH MODULE WITH FOUR BUTTONS

Adjust wire feed speed and voltage (manual MIG/MAG) or welding current and voltage trim (synergic MIG/MAG).

Art. no. 80100431



### SMART TORCH MODULE WITH FOUR BUTTONS AND GRAPHIC DISPLAY

Adjust wire feed speed and other functions including voltage, arc-adjust and sequence (manual MIG/MAG).

Adjust welding current and other functions including voltage trim, arc-adjust and sequence (synergic MIG/MAG).

Choose what you want to use the buttons for.

Art. no. 80100430

